




Presented By: Boone County Conservation  
District 

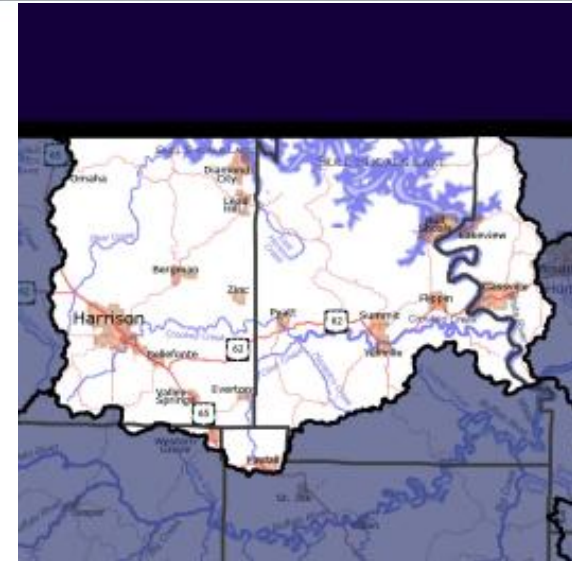
# Boone County Bull Shoals Watershed Project



# Boone County Bull Shoals Watershed Project

## Bull Shoals Lake Watershed

- 711,467.07 acres
- Recreational activities



- Source of drinking water for approximately 20,000 people in Boone, Newton, Marion, and Searcy Counties.



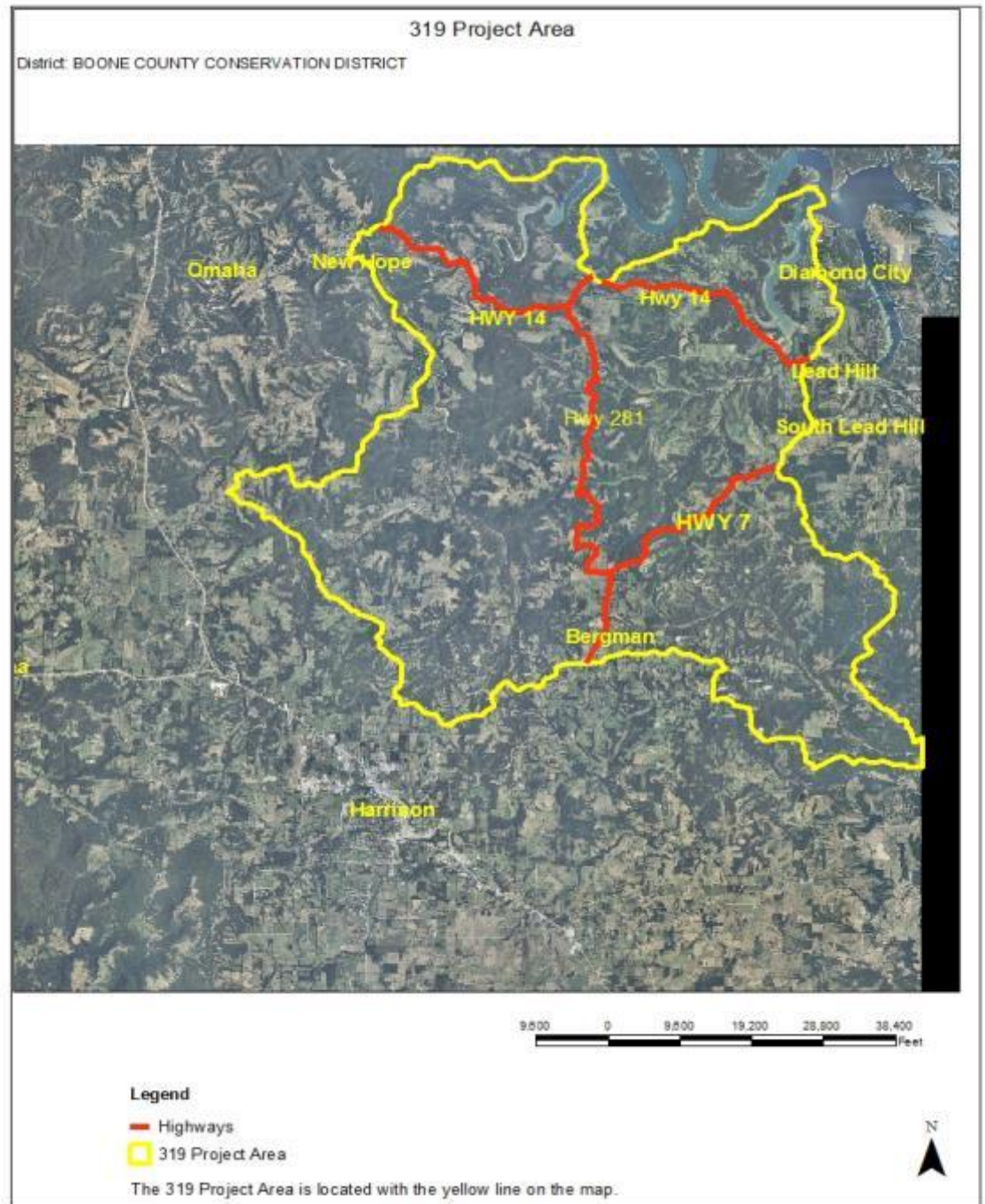
# Boone County Bull Shoals Watershed Project

## Project Focus

### Five sub watersheds:

- West Sugarloaf Creek
- Middle Bear Creek
- Lower Bear Creek
- Cheatham Creek
- Sugar Orchard Creek


A total of 104,711 acres



## Project Objective

- Reduce nutrients, sediment, and bacteria from entering Bear Creek (listed on 303 (d) as category 5, impaired)

## Project Goal

- Encourage voluntary participation of Best Management Practices (BMPs) on 50% of pastureland (approximately 12,065 acres)
- 

# Boone County Bull Shoals Watershed Project

---

## Best Management Practices (BMPs)

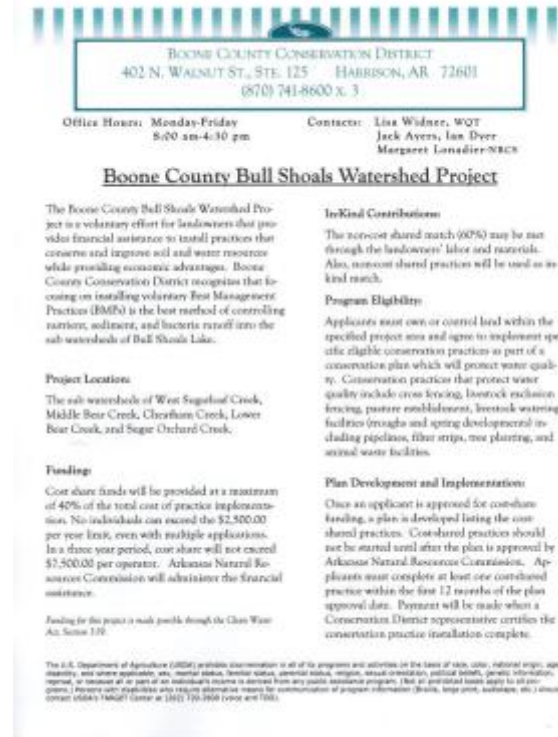
- Fencing (382)
- Watering Facilities (614)
- Pipeline (516)
- Forage & Biomass Planting (512)
- Heavy Use Area Protection (561)
- Filter Strips (393)
- Tree / Shrub Establishment (612)
- Composting Facility (317)
- Animal Mortality Facility (316)
- Spring Development (574)
- Ponds (378)
- Brush Management (314)



# Boone County Bull Shoals Watershed Project

## Outreach

- Newsletter Inserts Quarterly
- Facts Sheets
- Fair Booth at the Northwest Arkansas District Fair
- Project Highlighted on District's Website [www.boonecd.com](http://www.boonecd.com)
- Radio Spots & Newspaper Articles





# Boone County Bull Shoals Watershed Project

## Pasture Field Day April 27, 2013

- 35 operators in attendance
- Speakers included the:  
Extension Agent  
NRCS Grazing Lands Specialist  
NRCS District Conservationist  
BCCD Technicians & Board  
AR Game & Fish Biologist

*Happy Cows=Happy Profitable Farmers*

*Join Boone County Conservation District for a  
Pasture Field Day*

**Saturday, April 27, 2013**  
**9:30 am-1:00pm**  
(Registration begins at 9:30 with the program beginning at 10 am)



Location: David Thompson Farm, Lead Hill-AR  
From Harrison, take Hwy 7 North towards Lead Hill for 14.5 miles; turn left onto Cedar Grove Rd North; travel for 3.3 miles and continue straight onto Pleasant Valley Road; go for 1.1 miles and arrive at the farm: 3455 Pleasant Valley Dr.

- Learn about effective Brush & Weed Control Methods
- Pasture Recovery and Water Sources During / After A Drought
- How To Plan Best Management Practices for Livestock Operations
- Discussion of Financial Assistance Programs

There will be a no till drill and brush control demonstrations.

If you attend the Field day—including demonstrations—you will receive a one-time 10% discount towards rental of the no till drill from the District (offer applies to land no tilled in Boone County; discount does not apply to the security deposit or repairs incurred by the operator)

*Call to reserve lunch: (870) 741-8600, ext. 3  
Bring your own Lawn Chair!*



Sponsored by the Boone County Conservation District with speakers from: USDA-Natural Resources Conservation Service  
U of A Division of Agriculture Cooperative Extension Service

USDA IS AN EQUAL OPPORTUNITY PROVIDER AND EMPLOYER

This meeting is open to all eligible persons without regard to race, color, national origin, religion, gender, age, disability, marital or veteran status, or any other legally protected status. Persons with disabilities who require alternative means for communication of program information (large print, audiotapes, etc.) should notify the county Extension office (or other appropriate office) as soon as possible prior to the activity.

# Boone County Bull Shoals Watershed Project

*April 27, 2013 Pasture Field Day*





# Boone County Bull Shoals Watershed Project

## Completed Practices in Our First Year

Ponds (378)  
3,187.01 cu yds.



# Boone County Bull Shoals Watershed Project

## Forage & Biomass Planting (512)

414.70 Acres



Haybuster No Till Drill that was purchased for use in the Project Area.



# Boone County Bull Shoals Watershed Project



Pipeline (516)  
5000 ft.





# Boone County Bull Shoals Watershed Project

## Other BMPs Performed:



**Heavy Use Area Protection (561)**

**Brush Management (314)**

## BMPs Planned for this FY14:

**Spring Development (574) Watering Facilities (614)**

**Fencing (382) Ponds (378)**

## Accomplishments to Date

- Purchased a laptop computer, color laser jet printer, and a Haybuster No Till Drill.
- Completed 15 conservation plans
- Revised 6 Nutrient Management Plans & created 6 new plans
- \$21,640.86 has been paid to landowners  
(**\$34,470.95 landowner match**)



# Those Aiding in the Project

- Boone County Conservation District
- Natural Resource Conservation Service
- Boone County Extension Service
- Arkansas Natural Resources Commission
- US Environmental Protection Agency



# Boone County Bull Shoals Watershed Project



# Questions?

